



INTERLOCKING REDUCER STRIP

Installation and Maintenance Instructions

Johnsonite[®]
A Tarkett Company

Replay Interlocking Reducer Strip

Handling and Storage

1. Johnsonite flooring and adhesives must be site conditioned at room temperature for 48 hours prior to, during, and after installation. Room temperature must be maintained between 65° and 85°F (18° and 30°C) with HVAC system operating. A minimum temperature of 55°F (13°C) must be maintained afterwards. The ambient relative humidity should be between 40% and 60%.
2. In areas that are exposed to intense or direct sunlight, the product must be protected during the conditioning, installation, and adhesive curing periods, by covering the light source.
3. The highest quality of materials and workmanship is employed in the manufacture of Johnsonite Flooring and careful inspection is made before shipment. However, a quality installation is the responsibility of the installer. It is the installer's responsibility to verify the accuracy of the order and to ensure the materials are checked for damage,

defects, and satisfactory color match. An authorized Johnsonite distributor or Johnsonite representative must be notified of any defects before installation proceeds.

4. Johnsonite cannot accept responsibility for any loss or damage that may result from the use of this information, due to processing or working conditions and/or workmanship outside our control. Users are advised to confirm the suitability of this product by their own tests.

General Subfloor Preparation

1. **All subfloors** must be clean, smooth, flat and dry. The surface must be free of all dust, loose particles, solvents, paint, grease, oil, wax, alkali, sealing/curing compounds, old adhesive, and any other foreign material, which could affect installation.

Caution: Do not use oil based sweeping compounds. Fill all depressions, cracks, and other surface irregularities with a good quality Portland cement based underlayment patching compound.

NOTE: Contamination on the substrate can cause damage to the resilient flooring material. Permanent and non-permanent markers, pens, crayons, paint, etc., must not be used to write on the back of the flooring material or used to mark the substrate as they could bleed through and stain the flooring material. If these contaminants are present on the substrate they must be mechanically removed prior to the installation of the flooring material.

Caution: Do not use liquid solvents or adhesive removers.

Johnsonite does not recommend installing InterLock Rubber Tile over existing cushioned resilient floors.

Caution: Do not install rubber flooring in areas that are exposed to grease, oil or animal fats.

Caution: Some resilient flooring products and adhesives contain "asbestos fibers" and special handling of this material is required.

2. **Concrete subfloors** must be constructed as recommended by the American Concrete Institute's ACI 302.2 "Guide for Concrete Slabs that Receive Moisture-Sensitive Flooring Materials" and prepared to receive resilient flooring according to ASTM F 710 "Standard Practice for Preparing Concrete Floors to Receive Resilient Flooring".

All concrete subfloors must be tested for moisture:

Moisture tests must be conducted in accordance with ASTM F 2170 "Standard Test Method for Determining Relative Humidity in Concrete Floor Slabs using *in situ* Probes".

- ◆ The Moisture Vapor Emission Rate (MVER) of the concrete will have no measurable effect on the Interlock Tiles as they are not adhered to the concrete substrate.
- ◆ Moisture testing must be conducted to identify if the MVER of the concrete is within the approved limits of the patching compound manufactures specifications. (Follow the patching compound manufactures instructions for proper selection and use.)

3. **Wood subfloors** must have a minimum 18" (47 cm) of cross-ventilated space between the bottom of the joist and ground. Exposed earth crawl spaces should be sealed with a polyethylene moisture barrier.

Subfloors should meet local and national building codes. Trade associations, such as the APA "The Engineered Wood Association", offer structural guidelines for meeting various code requirements.

Countersink nail heads and fill depressions, joints, cracks, gouges, and chipped edges with a good quality Portland cement based patching compound.

4. **Terrazzo and Ceramic floor** surface must be thoroughly sanded to remove all glaze and waxes. Remove or replace all loose tiles and clean the grout lines. Use a Portland cement based leveling compound to fill all grout lines and other depressions.
5. **Concrete floors equipped with a radiant heating system:** Turn the heat down to 65°F (18°C) for at least 48 hours before installation. Heat may be gradually returned to operating temperature 48 hours after installation. Temperature should not exceed 85°F (30°C).

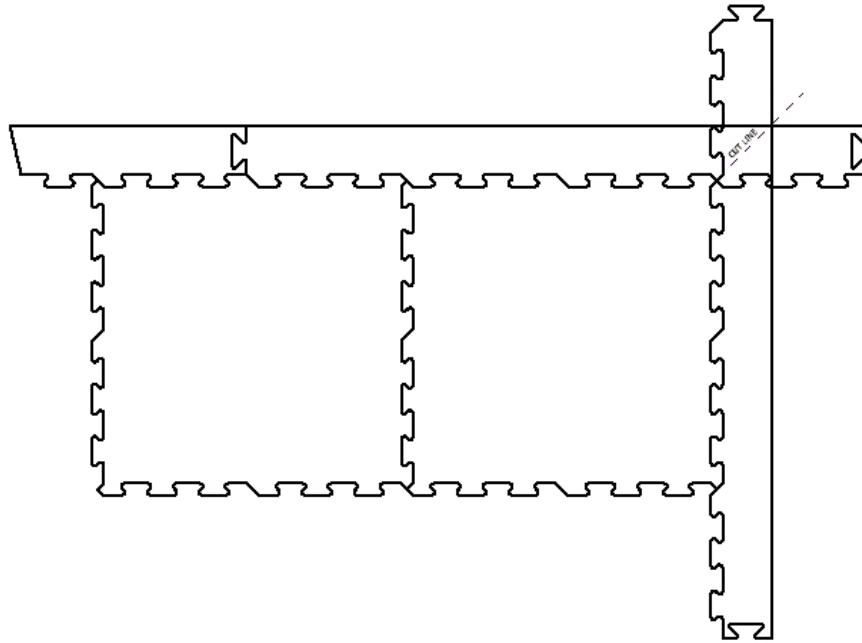
Replay Interlocking Reducer Installation

1. Installation of Reducer:

- a. Start by measuring the perimeter of the area requiring reducer and order the proper amount.
- b. Align the interlocking tabs of the reducer strip to the interlocking tabs of the tile (**Fig. 1**).
- c. Once the reducer and tiles are properly aligned, roll the tabs of the reducer with a small hand roller to secure the tabs.

2. Cutting Corners:

- a. Install a reducer at the corner intersection.
- b. Using a carpenter square or straight edge create a line from the corner of the tile to the outside intersection of the reducer strips (**Fig. 1**). Using a knife cut through the reducer strip.
- c. Install the other transition and using the pre-cut reducer strip as a guide, trace cut the bottom reducer strip to fit.
- d. Using Johnsonite 946 Premium Contact Adhesive, glue the two pieces together by applying the adhesive to the cut edge of each reducer.
- e. Allow the contact adhesive to dry prior to fitting the pieces together. Follow adhesive label instructions for proper use.
- f. Wipe any excess adhesive using a damp clean white cloth.



(Fig. 1)

Adhesive Clean Up

Excess adhesive should be removed during the installation process.

946 Premium Contact Adhesive

- ◆ Use a clean white cloth dampened with water to remove wet adhesive from floor covering and tools.
- ◆ Dried adhesive may require the use of denatured alcohol applied to a clean white cloth. (Follow manufacturer's precautions when using denatured alcohol.)

Maintenance

1. Wait 72 hours after installation before performing initial cleaning.
2. A regular maintenance program must be started after the initial cleaning.
3. Johnsonite Rubber Reducer is maintained with regular wiping using a wet, clean, soft, white cloth.
4. A mild detergent may be added to the water.
5. Coarse scrubbing media or harsh cleaning chemicals may damage the surface of the Rubber Reducer.

Visit www.johnsonite.com for most current installation and maintenance instructions.
Contact Johnsonite Technical Services at (800)-899-8916 ext 9297 with any questions.



Technical Services Department
16910 Munn Road, Chagrin Falls, Ohio 44023
(800) 899-8916 ext 9297 Fax (440) 632-5643
www.johnsonite.com
email: info@johnsonite.com
© 2014 Johnsonite Inc.