



Linoleum Repair



The Linoleum has been damaged.

Cut a square large enough to cover damaged area from a piece of material in attic stock. Match the marbled graining as close as possible when deciding where to cut the insert.



Use a cutting board or scrap piece of material to prevent further damage to the floorcovering. Ensuring that the directional grains of the sheet are pointing the same direction, position a straight edge at an angle to the edges of the square. Cut along the straight edge insuring that the knife cuts entirely through the material while holding the



knife blade perpendicular to the flooring. Turn the straightedge and make a second cut while holding the knife perpendicular to the flooring. Be sure that the second cut connects to the first.



Make a third connecting cut to create the desired shape for the custom insert. The shape can be a triangle or diamond. Do not make a square insert as this will cause the final repair to be more noticeable. Determine the most common flow of traffic within the space. The seams should fall at an angle to the direction of the line of sight. Never allow a seam to fall perpendicular to the most prevalent line of sight.

Using a small piece of Tarkett double sided tape adhere the insert to the flooring making sure that it covers the damaged area entirely



Lay the straight edge against the insert to help hold it in place. Carefully following the edge of the insert with a sharp utility knife, trace cut the flooring keeping the blade perpendicular to the flooring.

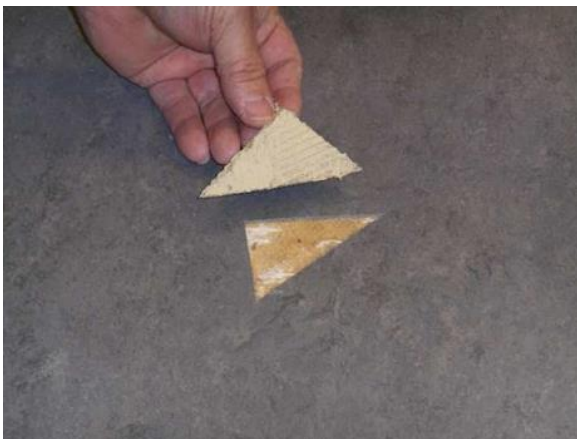


Making the third and final cut along the edge of the framing square. This ensures the damaged area cut out is just a little smaller than the insert to achieve a tight fit.

Carefully remove the damaged portion and scrape away any existing adhesive.



Released2015



Using the recommended adhesive and trowel apply adhesive to the back of the insert.

Allowing the appropriate open time, place the insert into the flooring and roll with a steel hand roller. Wipe up any excess adhesive with a damp white cloth.





Roll the flooring again with a 100lb 3 section roller. The linoleum has been repaired successfully.

“This is a reference guide to aid a qualified, professional flooring mechanic in the process of repairing damaged Johnsonite linoleum sheet products. This is not intended to replace our installation instructions or train a flooring installer on the process of repairing floorcovering. Please visit Johnsonite.com for detailed installation instructions or contact your local Johnsonite distributor to schedule a training seminar.”