



## RESILIENT WALL BASE

### Installation and Maintenance Instructions



A Tarkett Company

THE ULTIMATE FLOORING EXPERIENCE

## TightLock® Resilient-Topset Wall Base

### Handling and Storage

1. Johnsonite TightLock Wall Base and adhesives must be site conditioned at room temperature for 48 hours prior to, during, and after installation. Room temperature must be maintained between 65° and 85°F (18° and 30°C) with HVAC system operating. A minimum temperature of 55°F (13°C) must be maintained afterwards. The ambient relative humidity should be between 40% and 60%.
2. Care must be taken not to pull the wall base excessively when removing it from the carton or unrolling the coils. **The wall base will not shrink, but it will relax to its original length, if stretched.**
3. In areas that are exposed to intense or direct sunlight, the product must be protected during the conditioning, installation, and adhesive curing periods, by covering the light source.
4. The highest quality of materials and workmanship is employed in the manufacture of Johnsonite Flooring and careful inspection is made before shipment. However, a quality installation is the responsibility of the installer. It is the installer's responsibility to verify the

accuracy of the order and to ensure the materials are checked for damage, defects, and satisfactory color match. An authorized Johnsonite distributor or Johnsonite representative must be notified of any defects before installation proceeds.

5. Johnsonite cannot accept responsibility for any loss or damage that may result from the use of this information, due to processing or working conditions and/or workmanship outside our control. Users are advised to confirm the suitability of this product by their own tests.

### General Surface Preparation

1. **All walls** must be clean, smooth, flat and dry. The surface must be free of all dust, loose particles, solvents, paint, grease, oil, wax, alkali, sealing/curing compounds, old adhesive, and any other foreign material, which could affect installation. Remove existing adhesive mechanically – do not use chemical adhesive removers or solvents. Fill all depressions, cracks, and other surface irregularities with a good quality patching compound.

**NOTE:** Contamination on the substrate can cause damage to the resilient wall base material. Permanent and non-permanent markers, pens, crayons, paint, etc., must not be used to write on the back of the wall base material or used to mark

the substrate as they could bleed through and stain the wall base material. If these contaminants are present on the substrate they must be mechanically removed prior to the installation of the resilient wall base material.

**Caution: Do not use liquid solvents or adhesive removers.**

2. Do not install Johnsonite TightLock Wall Base over vinyl wallcoverings.
3. Do not install Johnsonite TightLock Wall Base over non-porous surfaces with Johnsonite 960 Wall Base Adhesive. Utilize Johnsonite 946 Premium Contact Adhesive following the non-porous application

instructions for all non-porous surface installations. Never install Johnsonite TightLock Wall Base on surfaces that will be exposed to drastic temperature changes or moisture.

4. **Terrazzo and Ceramic wall** surfaces must be thoroughly sanded to remove all glaze and waxes. Remove or replace all loose tiles and clean the grout lines. Use a Portland cement based leveling compound to fill all grout lines and other depressions.
5. **Steel** wall surfaces must be mechanically abraded to assist with the adhesive bond. The wall must be cleaned to remove all dirt, rust and other contaminants. When applying adhesive the non-porous installation instructions must be followed.

### TightLock Wall Base Installation

#### 1. Recommended Adhesives:

- a. Porous Surfaces **ONLY:**  
Johnsonite 960 Wall Base Adhesive  
Trowel: 1/8" x 1/8" x 1/8" "SQ" notch
- b. Non-Porous Surface:  
Johnsonite 946 Premium Contact Adhesive  
Apply adhesive with a Brush or Short Nap Roller

**Caution: Allow the adhesive to dry to the touch with no transfer to the finger. Once the adhesive reaches the "dry-to-touch" state, the wall base must be installed within 45 minutes and immediately rolled.**

#### 2. Installation Procedures:

- a. Allow coiled wall base to lay flat for at least 24 hours, between 65° and 85°F (18° and 30°C) with HVAC system

operating, prior to installation.

- b. For installations on **porous wall surfaces**, apply Johnsonite 960 Wall Base Adhesive to the ribbed surface (back) of the wall base with a 1/8" square-notched trowel. **The adhesive should cover 80% of the back surface.** Leave a 1/4" (6.35mm) uncovered space at the top of the wall base to prevent the adhesive from oozing onto the wall above the base when installed.
- c. For installations on **non-porous wall surfaces** (i.e.: metal, epoxy paint, ceramics, etc.) apply Johnsonite 946 Premium Contact Adhesive to both the wall surface and the back of the wall base. Allow adhesive to thoroughly dry to the touch.

Carefully position the wall base on the wall surface.

**Note:** Once contact is made to the wall surface, the wall base cannot be moved.

- d. Position wall base on wall surface and roll with hand roller. **Always roll back to starting point to prevent stretching the wall base.**

#### 3. Clean-up

- a. Use a clean white cloth dampened with water to remove wet adhesive from wall base, substrate, floor covering and tools.
- b. Dried adhesive may require the use of denatured alcohol applied to a clean white cloth. (Follow manufacturer's precautions when using denatured alcohol.)

## Corner Installation

TightLock's unique design allows for corners to be made easily at the job site and is as easy to make as traditional base. This ensures color consistency by using continuous runs. However, factory corners can be ordered. Each carton of TightLock includes a factory-made corner to demonstrate the cut required to produce a field-made outside corner, as illustrated.

### 1. Factory Made Corners

- a. **Install factory made corners before installing wall base.**
- b. Trowel adhesive to ribbed back of wall base corner.
- c. Position corner in place and roll to

### 3. Field-Made Outside Corners

ensure proper adhesive bond.

- d. Attention should be given to a tight and even fit to the corner.

**Note:** Contact adhesive may be used to ensure a faster setup at the corner.

### 2. Field-Made Inside Corners

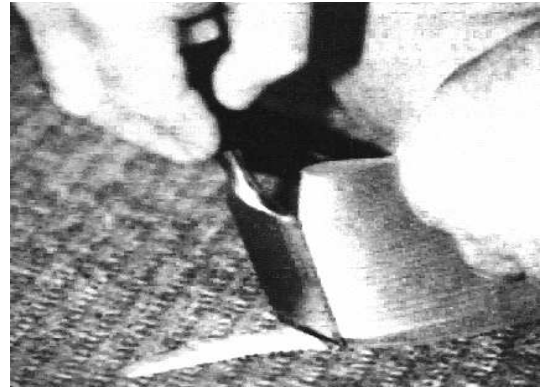
- a. Install TightLock and terminate into the corner.
- b. Set another piece of TightLock wall base on opposing wall without adhesive, butting it to the installed piece.
- c. Utilize dividers; place one pin at the

top of the installed piece and one pin at the top of the uninstalled piece. Carefully, move the dividers downward in a straight vertical motion, allowing the pin of the installed piece to follow the profile of the installed piece. At the same time, place adequate pressure on the pin to transfer and/or scribe the profile onto the surface of the uninstalled piece.

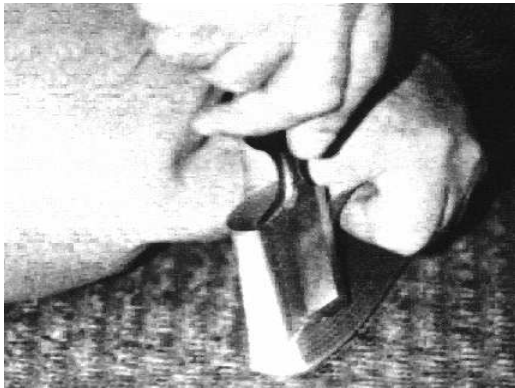
- d. Use a utility knife to cut the pattern on the uninstalled wall base, apply adhesive, and position the trimmed section into place.



a. Fold base in half



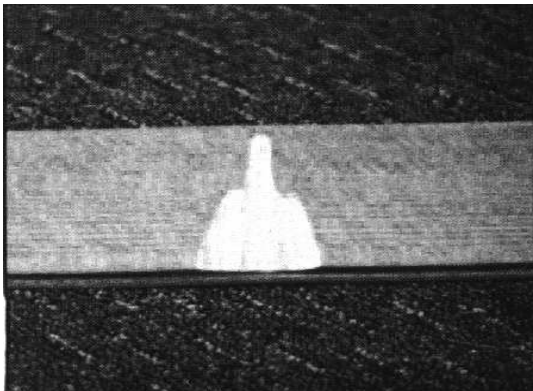
b. Make one continuous cut with a **sharp 1 1/2" wood chisel**



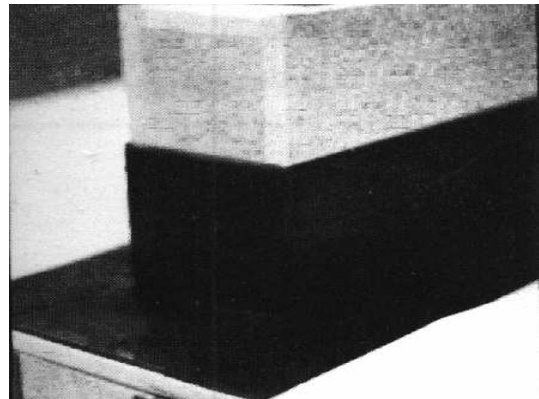
c. Shave both sides, starting half-way down and avoid cutting into the original center cut



d. Fold Tightly - groove out remaining upper portion. Nip top (**see completed corner below**)



e. Finished Cut



f. Completed corner

---

## Adhesive Clean Up

Excess adhesive should be removed during the installation process

### 960 Wall Base Adhesive

- ◆ Use a clean white cloth dampened with water to remove wet adhesive from wall base, substrate, floor covering and tools.
- ◆ Dried adhesive may require the use of denatured alcohol applied to a clean white cloth. (Follow manufacturer's

precautions when using denatured alcohol.)

### 946 Premium Contact Adhesive

- ◆ Use a clean white cloth dampened with water to remove wet adhesive from wall

- base, substrate, floor covering and tools.
- ◆ Dried adhesive may require the use of denatured alcohol applied to a clean white cloth. (Follow manufacturer's precautions when using denatured alcohol.)

---

## Maintenance

1. Wait 72 hours after installation before performing initial cleaning.
2. A regular maintenance program must be started after the initial cleaning.
3. Johnsonite TightLock Wall Base is

maintained with regular wiping using a wet, clean, soft, white cloth.

4. A mild detergent may be added to the water.
5. Coarse scrubbing media or harsh cleaning

chemicals may damage the surface of the wall base.

For further questions please contact Johnsonite Technical Services Department at 1-800-899-8916.

