

FINISHING ACCESSORIES



T Mouldings and Track Base	107
Adaptors	107
Reducers	107
Slim Line Transitions	107
Wheeled Traffic Transitions	108
Flexible Vinyl Corner Guards	108
Cove Filler Strips	109
Cove Caps	109
Thresholds	110
Feature Strips	110
Edge Guards	110
Tub Mouldings	110
SubFloor Leveler System	111
Tarkolay	111

We've talked at length about **Balanced Choice**. And what it can do to help balance the host of concerns you may face about function and aesthetics. Safety and efficiency. And up-front investment versus lifetime return. Nothing illustrates the science behind our system better than a look at the complete line of accessories we make available to you.

You've read how people are happiest when all loose ends are tied up. That's where accessories come in. They are the real nuts and bolts. Allowing you to quickly cross your t's and dot your i's. To bring order to disorder. And end all chaos.

People are happiest when they feel safe and secure. Special engineering means a line of accessories that meet or exceed the recommendations of the Americans with Disabilities Act (ADA), helping avoid the potential for slip and fall accidents and the ensuing drain on resources. Our Wheeled Traffic Transitions create gradual transitions between floors of varying heights. And our unique SubFloor Leveler System™ helps eliminate abrupt changes in elevation. All to keep people out of harm's way.

People are happiest when all their ducks are in order. That's why we make accessories that hold everything together. Leaving nothing to chance. Every detail is considered. Every element coordinated. It lets you finish off every space design without compromise. That's **Balanced Choice** at work for you.

# Floor Finishing Accessories

Transitioning from one floor thickness to another? We offer a wide range of transitions to smooth the way, creating a safer environment with fewer trips and stumbles.

## DIMENSIONS BY COLOR

1. Identify thickness of materials to be transitioned.
2. Find the corresponding color to match the thicknesses.
3. Find your colors together in any profile below.

0 = 0"	1/16" = 1/16"	.080" = .080"
1/8" = 1/8"	3/16" = 3/16"	1/4" = 1/4"
9/32" = 9/32"	5/16" = 5/16"	3/8" = 3/8"
1/2" = 1/2"		

Example: 1/4" 1/4 material to 1/8" 1/8 material.



TRANSITION SELECTOR CHART BY DIMENSION										
For profile drawing and details, see specific accessory categories on pages 107-110.										
Gauge	Subfloor	1/16"	.080"	1/8"	3/16"	1/4"	9/32"	5/16"	3/8"	1/2"
Subfloor		SSR-XX-B RRS-XX-A	RRS-XX-B	SSR-XX-B RRS-XX-C RRS-XX-D	CRS-XX-C EG-XX-J EG-XX-K	CRS-XX-A EG-XX-H EG-XX-M CTA-XX-J CTA-XX-JL		EG-XX-G EG-XX-L EG-XX-M	CRS-XX-B EG-XX-W CTA-XX-P CTA-XX-PL	CRS-XX-D CTA-XX-Q
1/16"	SSR-XX-B RRS-XX-A							CTA-XX-D		
.080"	RRS-XX-B		CTA-XX-Y	SLT-XX-B CTA-XX-X		CTA-XX-HT SLT-XX-C			CTA-XX-Z	
1/8"	SSR-XX-B RRS-XX-C RRS-XX-D		SLT-XX-B CTA-XX-X	CTA-XX-N FS-XX-DW1 FS-XX-DW2 FS-XX-DW3		SLT-XX-A CTA-XX-H CTA-XX-HL CTA-XX-A CTA-XX-C CE-XX-A		CTA-XX-D CE-XX-A	CTA-XX-K	CD-XX-B
3/16"	CRS-XX-C EG-XX-J EG-XX-K									
1/4"	CRS-XX-A EG-XX-H EG-XX-M CTA-XX-J CTA-XX-JL		SLT-XX-C CTA-XX-HT	SLT-XX-A CTA-XX-H CTA-XX-HL CTA-XX-A CTA-XX-C CE-XX-A		CTA-XX-M CD-XX CD-XX-C CD-XX-W		CD-XX CD-XX-C CD-XX-W	CTA-XX-L CT-XX	CE-XX-C
9/32"							CCC-XX-B			
5/16"	EG-XX-G EG-XX-L EG-XX-M	CTA-XX-D		CTA-XX-D CE-XX-A		CD-XX CD-XX-C CD-XX-W		CD-XX CD-XX-C CD-XX-W	CCA-XX	CWA-XX
3/8"	CRS-XX-B EG-XX-W CTA-XX-P CTA-XX-PL		CTA-XX-Z	CTA-XX-K		CTA-XX-L CT-XX		CCA-XX		CE-XX-C
1/2"	CRS-XX-D CTA-XX-Q			CD-XX-B		CE-XX-C		CWA-XX	CE-XX-C	CD-XX-A

Can't find a transition to meet your needs? Call your Johnsonite representative and ask about getting a custom floor finishing accessory made for you.

New accessories added periodically. Check our web site for the latest additions.

TRACK FOR T MOULDINGS

<b>CDB-00-A</b> Rigid Vinyl  Pinless for adhesive installations. Neutral color only.	
<b>MT-00-A</b>  Aluminum pinless for adhesive installations.	
<b>MT-00-B</b>  Aluminum pin type for stretch-in installations.	
<b>MTC-00-A</b>  Aluminum contour track for adhesive installations. 6' minimum radius.	
<b>MTC-00-B</b>  Aluminum pin type contour track for stretch-in installations. 6' minimum radius.	



For representation of actual size, enlarge CAD drawing 333 percent on a photocopier.

ADHESIVES PG. 114  
SPECIFICATIONS PG. 121

For available colors, reference color palette A on last page.

- A +14 Tropical Storm, 15 Cabernet, 60 Taupe, 129 Silk, 132 Espresso, 150 Wetlands and 167 Fudge.



T MOULDINGS

<b>CE-XX-A</b>  1/4" and 5/16" to 1/8" material. 1/4" leg.	
<b>CE-XX-C</b>  3/8" and 1/4" to 1/2" material. 1/2" leg.	
<b>CD-XX</b>  1/4" and 5/16" to material of same height. 1/4" leg.	
<b>CD-XX-A</b>  1/2" to material of same height. 1/2" leg.	
<b>CD-XX-B</b>  1/2" to 1/8" material. 1/2" leg.	
<b>CD-XX-C</b>  1/4" and 5/16" to material of same height. 1/4" leg.	
<b>CD-XX-W</b>  1/4" and 5/16" to material of same height. 1/4" leg.	

SLIM LINE TRANSITIONS

<b>SLT-XX-A</b> <b>SLTC-XX-A</b>  1/4" to 1/8" material.	
<b>SLT-XX-B</b> <b>SLTC-XX-B</b>  .080" to 1/8" material.	
<b>SLT-XX-C</b> <b>SLTC-XX-C</b>  .080" to 1/4" material.	

\*Slim line transitions available for materials with a contour edge.

REDUCERS

<b>CRS-XX-A</b>  1/4" material to floor.	
<b>CRS-XX-B</b>  3/8" material to floor.	
<b>CRS-XX-C</b> 50' roll  3/16" material to floor.	
<b>CRS-XX-D</b>  1/2" material to floor.	
<b>SSR-XX-B</b> 35' roll  1/16" or 1/8" material to floor.	
<b>RRS-XX-A</b> 3' pieces  1/16" material to floor.	
<b>RRS-XX-B</b> 3' pieces  .080" material to floor.	
<b>RRS-XX-C</b> 3' pieces  1/8" material to floor.	
<b>RRS-XX-D</b> 25' roll  1/8" material to floor.	

ADAPTORS

<b>CTA-XX-A</b>  1/4" to 1/8" material.	
<b>CTA-XX-C</b>  1/4" to 1/8" material.	
<b>CTA-XX-D</b>  5/16" to 1/16" or 1/8" material.	
<b>CCA-XX</b>  3/8" to 5/16" material.	
<b>CWA-XX</b>  1/2" to 5/16" material.	

WHEELED TRAFFIC TRANSITIONS

<p><b>CTA-XX-H</b>                  ⚡ Patented                  1/4" to 1/8" material.</p>		<p>1/4</p> <p>1/8</p>
<p><b>CTA-XX-HL</b>                  ⚡ Patented                  1/4" to 1/8" material.</p>		<p>1/4</p> <p>1/8</p>
<p><b>CTA-XX-HT</b>                  ⚡ Patented                  1/4" to .080" or 2 mm material.</p>		<p>1/4</p> <p>.080</p>
<p><b>CTA-XX-J</b>                  1/4" material to subfloor.</p>		<p>1/4</p> <p>0</p>
<p><b>CTA-XX-JL</b>                  1/4" material to subfloor.</p>		<p>1/4</p> <p>0</p>
<p><b>CTA-XX-K</b>                  ⚡ Patented                  3/8" to 1/8" material.</p>		<p>3/8</p> <p>1/8</p>
<p><b>CTA-XX-L</b>                  ⚡ Patented                  3/8" to 1/4" material.</p>		<p>3/8</p> <p>1/4</p>
<p><b>CTA-XX-M</b>                  1/4" to 1/4" material.</p>		<p>1/4</p> <p>1/4</p>
<p><b>CTA-XX-N</b>                  1/8" to 1/8" material.</p>		<p>1/8</p> <p>1/8</p>
<p><b>CTA-XX-P</b>                  3/8" material to subfloor.</p>		<p>3/8</p> <p>0</p>
<p><b>CTA-XX-PL</b>                  3/8" material to subfloor.</p>		<p>3/8</p> <p>0</p>
<p><b>CTA-XX-Q</b>                  1/2" material to subfloor.</p>		<p>1/2</p> <p>0</p>
<p><b>CTA-XX-X</b>                  .080" to 1/8" material.</p>		<p>1/8</p> <p>.080</p>
<p><b>CTA-XX-Y</b>                  .080" to .080" material.</p>		<p>.080</p> <p>.080</p>
<p><b>CTA-XX-Z</b>                  3/8" to .080" material.</p>		<p>3/8</p> <p>.080</p>

⚡ U.S. Patent No. 5,581,967

FLEXIBLE VINYL CORNER GUARDS

Johnsonite's corner guards will not only complement the interior space, but also work to protect your finished design.

- Will not shrink, crack or chip
- 4 return sizes: 2-3/8", 1-1/2", 3/4" and 1-1/4"

FLEXIBLE VINYL CORNER GUARDS

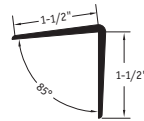
**VBG-XX-B-48**  
**VBG-XX-B-96**  
 4' or 8' pieces

Corner guard.  
 3/4" returns.  
 1/8" thick.  
 Tapered ends.



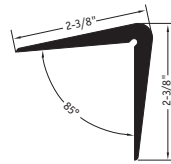
**VBG-XX-A-48**  
**VBG-XX-A-96**  
 4' or 8' pieces

Corner guard.  
 1-1/2" returns.  
 1/8" thick.  
 Tapered ends.



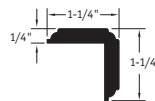
**VBG-XX-48**  
**VBG-XX-96**  
 4' or 8' pieces

Corner guard.  
 2-3/8" returns.  
 1/8" thick.  
 Tapered ends.

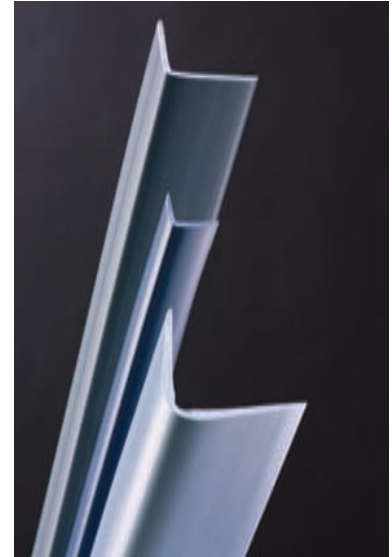


**VBG-XX-C** ♦  
 8' pieces

Millwork profile corner guard.  
 1-1/4" returns.  
 1/4" thick.



- Also available in 14 Tropical Storm, 15 Cabernet, 60 Taupe and 132 Espresso.
- ♦ Available in Selects Color Palette. Unfold color guide on last page.



For representation of actual size, enlarge CAD drawing 333 percent on a photocopier.

ADHESIVES PG. 114  
 SPECIFICATIONS PG. 121



For available colors, reference color palette A on last page.  
**A** +14 Tropical Storm, 15 Cabernet, 60 Taupe, 129 Silk, 132 Espresso, 150 Wetlands and 167 Fudge.





For representation of actual size, enlarge CAD drawing 333 percent on a photocopier.  
 ADHESIVES PG. 114  
 SPECIFICATIONS PG. 121

COVE FILLER STRIPS	
<p><b>CFS-00</b> 1-3/4" radius.</p>	
<p><b>CFS-00-A</b> 1-1/4" radius.</p>	
<p><b>CFS-00-M</b> 5' pieces 1" radius.</p>	

Due to the use of pre-consumer recycled content, color of cove filler strips will vary.

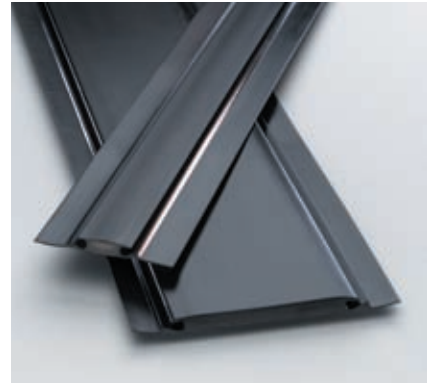
**COVE CAPS**

<p><b>SCC-XX-A</b> For 1/8" materials.</p>	
<p><b>SCC-XX-B</b> For 1/8" materials.</p>	
<p><b>CCC-XX-A</b> For 1/4" or 5/16" materials.</p>	
<p><b>CCC-XX-B</b> 9/32" inside dimension.</p>	
<p><b>CCC-XX-C</b> For 1/4" materials.</p>	
<p><b>CCC-XX-D</b> For 3/16" materials.</p>	
<p><b>RCC-XX</b> 12' length For 1/4" or 5/16" materials.</p>	
<p><b>SCC-XX-D</b> with self-stick tape For .080" materials.</p>	

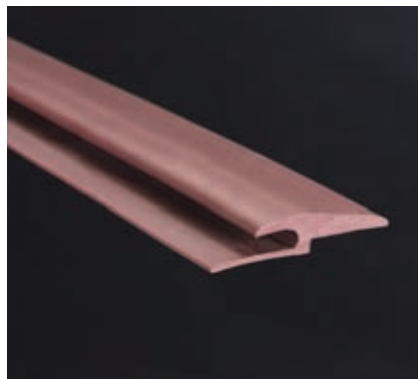
For available colors, reference color palette A on last page.  
**A** +14 Tropical Storm, 15 Cabernet, 60 Taupe, 129 Silk, 132 Espresso, 150 Wetlands and 167 Fudge.



THRESHOLDS	
<p><b>VT-XX-M2</b> 3' pieces</p> <p>5-1/2" exposed surface threshold for stretch-in or adhered carpet and ceramic.</p>	
<p><b>VT-XX-M6</b> 3' pieces</p> <p>1-3/4" exposed surface threshold for stretch-in or adhered carpet and ceramic.</p>	



FEATURE STRIPS	
<p><b>FS-XX-DW1</b> 50' roll</p> <p>1/4" wide feature strip for 1/8" material.</p>	
<p><b>FS-XX-DW2</b> 50' roll</p> <p>1/2" wide feature strip for 1/8" material.</p>	
<p><b>FS-XX-DW3</b> 50' roll</p> <p>1" wide feature strip for 1/8" material.</p>	



EDGE GUARDS	
<p><b>EG-XX-G</b></p> <p>5/16" material to floor.</p>	
<p><b>EG-XX-H</b></p> <p>1/4" material to floor.</p>	
<p><b>EG-XX-J</b></p> <p>3/16" material to floor.</p>	
<p><b>EG-XX-K</b></p> <p>3/16" material to floor.</p>	
<p><b>EG-XX-L</b></p> <p>5/16" material to floor.</p>	
<p><b>EG-XX-M</b></p> <p>Stretch-in carpet to floor.</p>	
<p><b>EG-XX-W</b></p> <p>3/8" material to floor.</p>	

TUB MOULDINGS	
<p><b>TM-50*</b></p> <p>5' pieces (Self-Stick)</p> <p>Luster finish cove for bathtub, counter and shelves. 1-1/2" height. White only.</p>	
<p><b>TM-50-A*</b></p> <p>5' pieces (Self-Stick)</p> <p>Luster finish cove for bathtub, counter and shelves. 1" height. White only.</p>	

\* Available in 50 White only.

For representation of actual size, enlarge CAD drawing 333 percent on a photocopier.

ADHESIVES PG. 114  
SPECIFICATIONS PG. 121

For available colors, reference color palette A on last page.

**A** +14 Tropical Storm, 15 Cabernet, 60 Taupe, 129 Silk, 132 Espresso, 150 Wetlands and 167 Fudge.

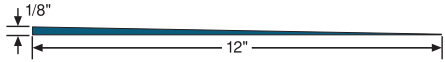
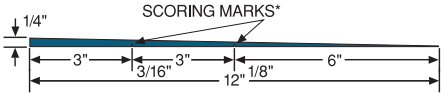
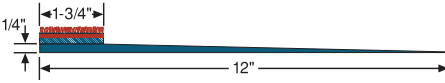
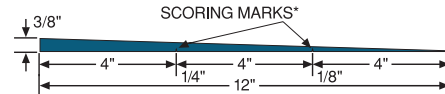
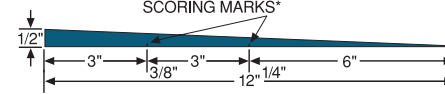
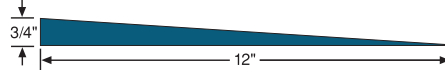
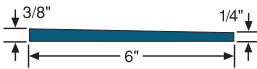
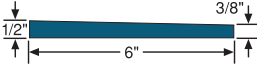


# SubFloor Leveler System™

U.S. Patent No. 7,174,682

9 . 1 1 1

## SUBFLOOR LEVELER SYSTEM COMPONENTS (BLACK ONLY)

<p><b>LS-40-F</b></p> <p>Reduces 1/8" to 0"</p>	
<p><b>LS-40</b></p> <p>Reduces 1/4" to 0". Can be cut at score line to reduce height as indicated.</p>	
<p><b>LS-40-K</b></p> <p>Reduces 1/4" to 0". Levelled edge for tack strip installation.</p>	
<p><b>LS-40-D</b></p> <p>Reduces 3/8" to 0". Can be cut at score line to reduce height as indicated.</p>	
<p><b>LS-40-E</b></p> <p>Reduces 1/2" to 0". Can be cut at score line to reduce height as indicated.</p>	
<p><b>LS-40-G</b></p> <p>Reduces 3/4" to 0"</p>	
<p><b>LS-40-B</b></p> <p>Reduces 3/8" to 1/4". Can be used alone or with LS-40 to extend transition.</p>	
<p><b>LS-40-C</b></p> <p>Reduces 1/2" to 3/8". Can be used alone or with LS-40-D or LS-40-B to extend transition.</p>	

\*The LS-40, LS-40-D and LS-40-E Leveler System Components can be cut at specially premarked scoring lines to create lower transitions for 1/8", 3/16", 1/4" or 3/8" gauge heights if needed, or can be cut to create job-specific heights. All SubFloor Leveler System Components are 48" long or can be special ordered in other lengths.

Safety and efficiency. The two balance each other out with Johnsonite's patented SubFloor Leveler System™. It's designed to help eliminate abrupt changes in elevation that tend to trip people up, providing a gradual ramp for a smooth transition between two different flooring elevations. Unlike traditional patching compounds, the Leveler System eliminates the need for costly man-hours, long curing time and uncertain results. Instead, the SubFloor Leveler System installs easily and is ideal in high-traffic areas where small elevation changes can cause expensive slip/fall accidents.

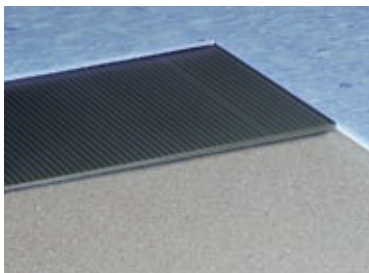
AVAILABLE IN 4' SECTIONS  
 CUSTOM LENGTHS AVAILABLE BY SPECIAL ORDER  
 QUICKLY PROVIDES A SMOOTH, UNIFORM ADA-COMPLIANT TRANSITION  
 NO WAITING FOR LEVELING COMPOUNDS TO CURE  
 IMMEDIATELY ACCEPTS NEW FLOORING OVER IT  
 INSTALLS OVER CONCRETE, WOOD, TERRAZZO, CERAMIC AND STEEL SUBFLOORS  
 WILL NOT CRACK OR CRUMBLE OVER TIME

ADHESIVES PG. 114  
 SPECIFICATIONS PG. 121

## UNDERLAYMENT

### Tarkolay

Issues with subfloor? Tarkolay's unique construction allows you to install right away in areas where moisture, abatement and other unique subfloor issues exist.



## CORNER MITER OPTION

Pieces can be cut and fit together to form mitered corners to transition evenly from all sides.

