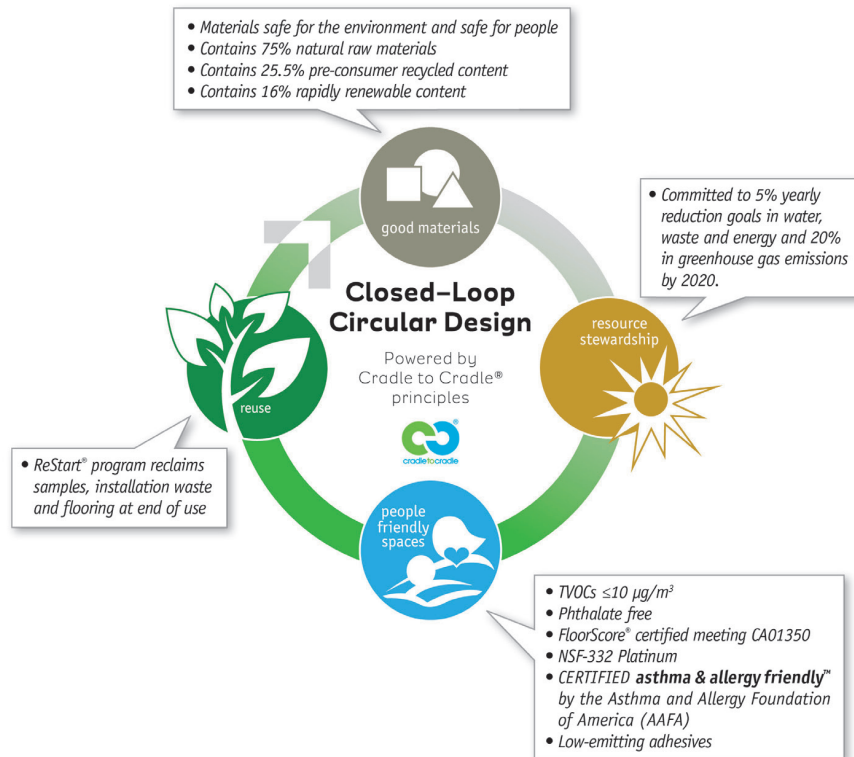


# iQ Natural

The world's population is growing fast. The same goes for global consumption. We need to move away from primary resource consumption that follows the "take-make-dispose" pattern. Instead, we need to think more in a way of reusing materials indefinitely without compromising on quality or value that help people to live well on our planet. We call it Circular, Closed Loop Design.



## ADDITIONAL INFORMATION:

### GOOD RAW MATERIALS

- Systematic raw material testing ensures consistency

### RESOURCE STEWARDSHIP

- Audited for environmental risk assessment by external third party

### PEOPLE-FRIENDLY SPACES

- No need for polish or wax, forever, reducing the strain on cleaning staff and minimizing the need for water, detergent and energy for cleaning and maintenance.

### REDUCE AND RECYCLE

- Off specification batches are reprocessed during manufacturing to prevent waste

Please note: The data available on this Product Fact Sheet relates to Tarkett products and services as of the date of its publication. It is provided for information purposes only. Tarkett does not guarantee that the information contained in the Product Fact Sheet is accurate, complete and up-to-date and shall not be held responsible for any error or omission. Prior to circulation, quoting, or reproducing for distribution purposes it is recommended to have the Product Fact Sheet reviewed and updated by the appropriate department.

For more information visit [www.tarkettna.com/environmental](http://www.tarkettna.com/environmental)



THE ULTIMATE  
FLOORING EXPERIENCE